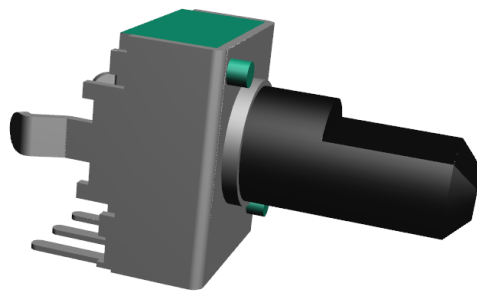
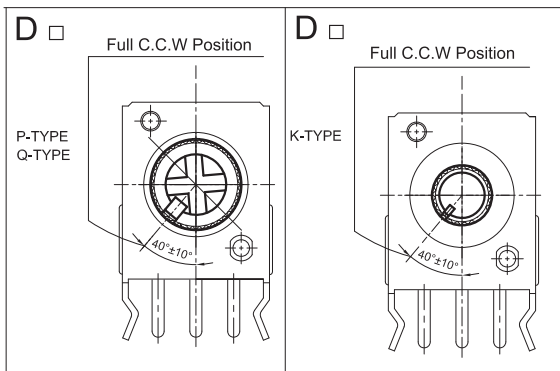
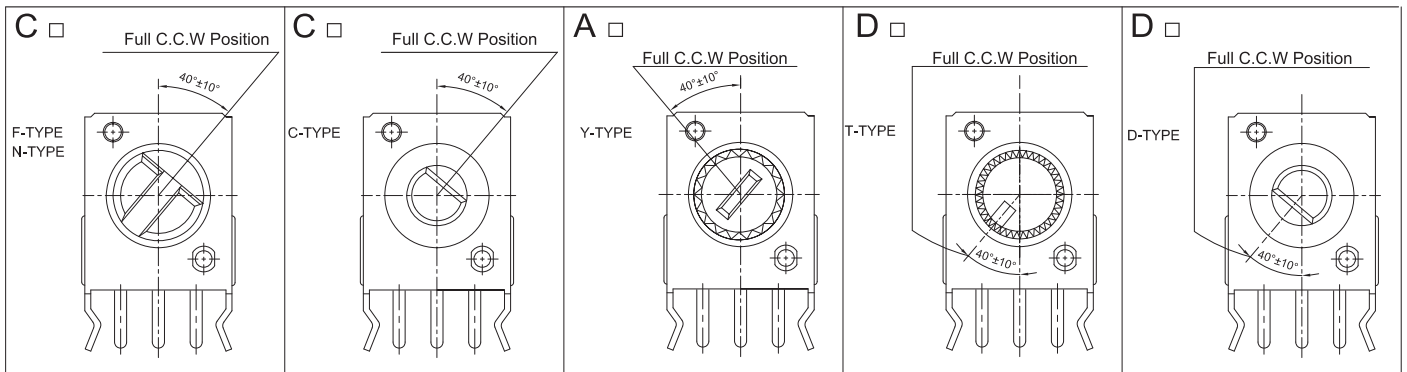


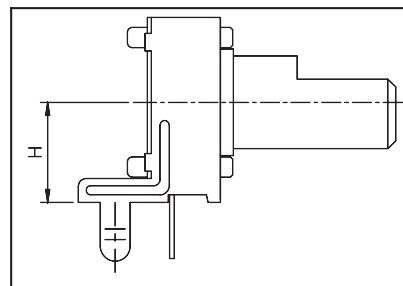
F-09K 系列 塑胶轴电位器  
F-09K Series Insulated Shaft Potentiometer



Full C.CW position



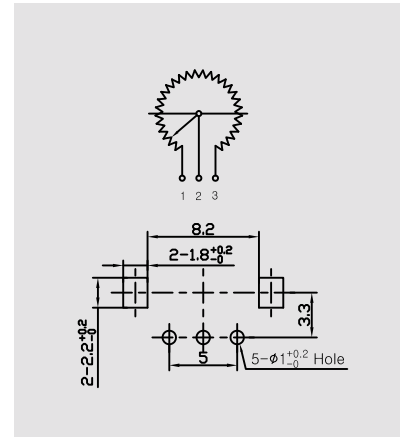
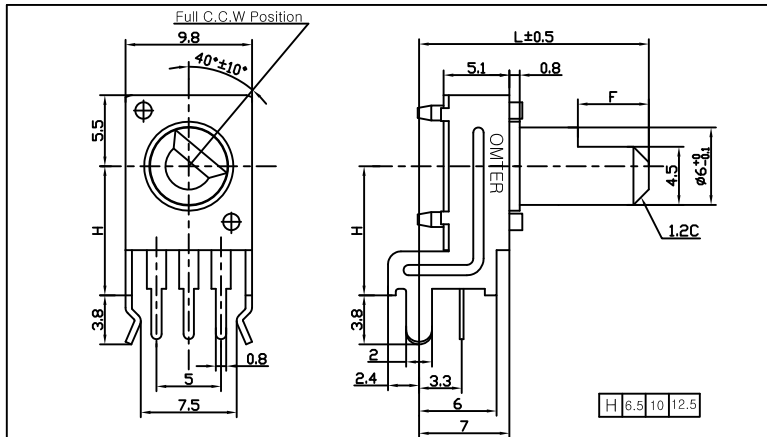
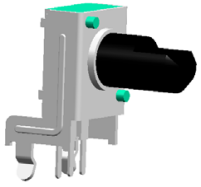
Height (H)



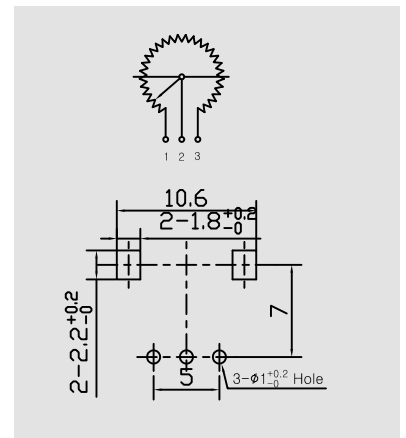
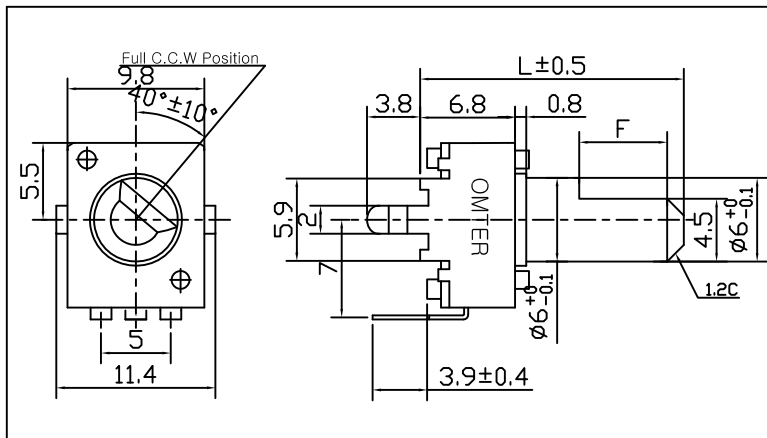
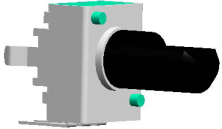
Shaft Type & Shaft Length

<p>F-TYPE</p> <table border="1"> <tr><td>Code</td><td>1</td><td>2</td><td>3</td><td>4</td><td>5</td><td>6</td><td>7</td><td>8</td></tr> <tr><td>L</td><td>15</td><td>18</td><td>20</td><td>25</td><td>25</td><td>30</td><td>34</td><td>35</td></tr> <tr><td>F</td><td>6</td><td>9</td><td>7</td><td>7</td><td>12</td><td>12</td><td>11</td><td>12</td></tr> </table>	Code	1	2	3	4	5	6	7	8	L	15	18	20	25	25	30	34	35	F	6	9	7	7	12	12	11	12	<p>P-TYPE</p> <p>40 TEETH KNURL</p> <table border="1"> <tr><td>Code</td><td>1</td><td>2</td><td>3</td><td>4</td><td>5</td><td>6</td><td>7</td></tr> <tr><td>L</td><td>9.5</td><td>15</td><td>15</td><td>20</td><td>25</td><td>30</td><td>35</td></tr> <tr><td>I</td><td>0</td><td>6</td><td>7</td><td>7</td><td>7</td><td>7</td><td>7</td></tr> </table>	Code	1	2	3	4	5	6	7	L	9.5	15	15	20	25	30	35	I	0	6	7	7	7	7	7
Code	1	2	3	4	5	6	7	8																																												
L	15	18	20	25	25	30	34	35																																												
F	6	9	7	7	12	12	11	12																																												
Code	1	2	3	4	5	6	7																																													
L	9.5	15	15	20	25	30	35																																													
I	0	6	7	7	7	7	7																																													
<p>Y-TYPE</p> <p>18 TEETH KNURL</p> <table border="1"> <tr><td>Code</td><td>1</td><td>2</td><td>3</td><td>4</td><td>5</td><td>6</td><td>7</td></tr> <tr><td>L</td><td>15</td><td>16</td><td>20</td><td>25</td><td>30</td><td>35</td><td>15</td></tr> <tr><td>I</td><td>7</td><td>7</td><td>7</td><td>7</td><td>7</td><td>7</td><td>6</td></tr> </table>	Code	1	2	3	4	5	6	7	L	15	16	20	25	30	35	15	I	7	7	7	7	7	7	6	<p>Q-TYPE</p> <p>40 TEETH KNURL</p> <table border="1"> <tr><td>Code</td><td>1</td><td>2</td></tr> <tr><td>L</td><td>15</td><td>20</td></tr> <tr><td>I</td><td>7</td><td>7</td></tr> </table>	Code	1	2	L	15	20	I	7	7																		
Code	1	2	3	4	5	6	7																																													
L	15	16	20	25	30	35	15																																													
I	7	7	7	7	7	7	6																																													
Code	1	2																																																		
L	15	20																																																		
I	7	7																																																		
<p>T-TYPE</p> <p>40 TEETH KNURL</p> <table border="1"> <tr><td>Code</td><td>1</td><td>2</td><td>3</td><td>4</td><td>5</td></tr> <tr><td>L</td><td>15</td><td>20</td><td>25</td><td>30</td><td>35</td></tr> <tr><td>I</td><td>6</td><td>7</td><td>7</td><td>7</td><td>7</td></tr> </table>	Code	1	2	3	4	5	L	15	20	25	30	35	I	6	7	7	7	7	<p>C-TYPE</p> <table border="1"> <tr><td>Code</td><td>1</td></tr> <tr><td>L</td><td>12.5</td></tr> <tr><td>F</td><td>4.5</td></tr> </table>	Code	1	L	12.5	F	4.5																											
Code	1	2	3	4	5																																															
L	15	20	25	30	35																																															
I	6	7	7	7	7																																															
Code	1																																																			
L	12.5																																																			
F	4.5																																																			
<p>N-TYPE</p> <table border="1"> <tr><td>Code</td><td>1</td><td>2</td><td>3</td><td>4</td><td>5</td><td>6</td></tr> <tr><td>L</td><td>15</td><td>20</td><td>25</td><td>30</td><td>34</td><td>35</td></tr> <tr><td>F</td><td>6</td><td>7</td><td>12</td><td>12</td><td>12</td><td>12</td></tr> </table>	Code	1	2	3	4	5	6	L	15	20	25	30	34	35	F	6	7	12	12	12	12	<p>D-TYPE</p> <table border="1"> <tr><td>Code</td><td>1</td></tr> <tr><td>L</td><td>12.5</td></tr> <tr><td>F</td><td>4.5</td></tr> </table>	Code	1	L	12.5	F	4.5																								
Code	1	2	3	4	5	6																																														
L	15	20	25	30	34	35																																														
F	6	7	12	12	12	12																																														
Code	1																																																			
L	12.5																																																			
F	4.5																																																			
<p>K-TYPE</p> <p>24 TEETH KNURL</p> <table border="1"> <tr><td>Code</td><td>1</td><td>2</td><td>3</td><td>4</td></tr> <tr><td>L</td><td>20</td><td>25</td><td>30</td><td>35</td></tr> <tr><td>I</td><td>7</td><td>7</td><td>7</td><td>7</td></tr> </table>	Code	1	2	3	4	L	20	25	30	35	I	7	7	7	7																																					
Code	1	2	3	4																																																
L	20	25	30	35																																																
I	7	7	7	7																																																

F-09KV



F-09KH



参数特性 General Specification:

MAIN SPECIFICATION	
全阻值: Total Resistance	500Ω- 1MΩ
全阻值公差 Total Resistance tolerance:	±20%
抵抗变化特性: Resistance Tape	A,B,C,D
最大工作电压: Max. operation voltage	AC 50V, DC12V
额定功率: (W) Ratings Power	0.05W
杂音: Noise	Less than 100mV
耐电压: Withstanding voltage	1 minute at AC250V
绝缘抵抗: Insulation resistance	More than 100MΩat DC 100V
残留阻值: Residual Resistance Value	Term.1~2: Less than 100Ω
	Term.2~3: Less than 100Ω
MECHANICAL	
全回转角度: Total Rotation Angle	280±10(degree)
旋转力矩: Rotation Torque	10~100 gf.cm
旋转止动强度: Shaft Stop Strength	3.0Kgf.cm Min
推拉强度: push-pull strength	5kgf Min Pull:0.2kgf Min
Durable performance	
旋转寿命: Rotational life	10000Cycle